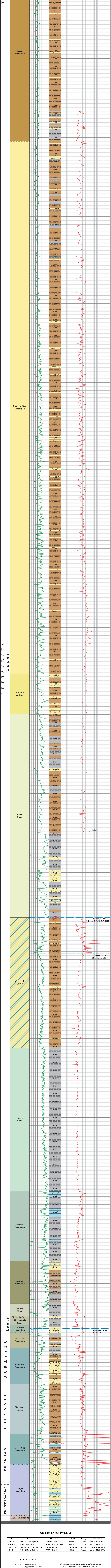


GEOLOGIC STORAGE ASSESSMENT OF CARBON DIOXIDE (CO₂) IN THE LARAMIDE BASINS OF WYOMING

TYPE LOG HANNA BASIN



WELLS USED FOR TYPE LOG

API #	Operator	Well Name	Field	County	Surface Location
49-007-20667	FMF Oil & Gas Property Inc.	Seminole W-36958 1-30	Wildcat	Carbon	sec. 30, T24N, R83W
49-007-21907	Dudley & Associates LLC	Dudley UPLRC 3-27-24-85	Wildcat	Carbon	sec. 27, T24N, R85W
49-007-22438	Western Interior Oil & Gas Corp.	Elk Mountain 1-22	Elk Mountain	Carbon	sec. 22, T20N, R80W
49-007-21093	Union Oil Co. of California	UPRR 44G-21 1	Wildcat	Carbon	sec. 21, T22N, R78W

EXPLANATION

- Unconformity
- Approximate contact
- Reconstructed cumulative log depth
- Actual log depth

NOTICE TO USERS OF INFORMATION FROM THE WYOMING STATE GEOLOGICAL SURVEY

The WSGS encourages the fair use of its material. We request that credit be expressly given to the "Wyoming State Geological Survey" when citing information from this publication. Please contact the WSGS at 307-766-2386, ext. 224, or by email at wsgs.sales@wy.gov if you have questions about citing materials, preparing acknowledgments, or extensive use of this material. We appreciate your cooperation.

Individuals with disabilities who require an alternative form of this publication should contact the WSGS. For the TTY relay operator call 1-800-877-9975.

For more information about the WSGS or to order publications and maps, go to www.wsgs.wyo.gov, call 307-766-2286, ext. 224, or email wsgs.sales@wy.gov.

DISCLAIMERS

The Wyoming State Geological Survey (WSGS) and the State of Wyoming make no representation or warranty, expressed or implied, regarding the use, accuracy, or completeness of the data presented herein, or of a chart printed from these data. The act of distribution shall not constitute such a warranty. The WSGS does not guarantee the digital data or any chart printed from the data to be free of errors or inaccuracies.

The WSGS and the State of Wyoming disclaim any responsibility or liability for interpretations made from these digital data or from any chart printed from these digital data, and for any decisions based on the digital data or printed charts. The WSGS and the State of Wyoming retain and do not waive sovereign immunity.

The use of or reference to trademarks, trade names, or other product or company names in this publication is for descriptive or informational purposes only, or is pursuant to licensing agreements between the WSGS or State of Wyoming and software or hardware developers/vendors, and does not imply endorsement of those products by the WSGS or the State of Wyoming.

REFERENCES

Love, J.D., Christiansen, A.C., and Ver Ploeg, A.J., comps. 1993. Stratigraphic chart showing Phanerozoic nomenclature for the State of Wyoming. Geological Survey of Wyoming (Wyoming State Geological Survey).

Wyoming Oil and Gas Conservation Commission, 2012. (digital log data), at <http://wgccc.state.wy.us>.

Layout and design by James R. Rodgers
 Edited by Suzanne C. Lahr

Note: The lithologies shown are general and meant to depict average lithologic conditions and are not based on petrophysical analysis of cores or logs.