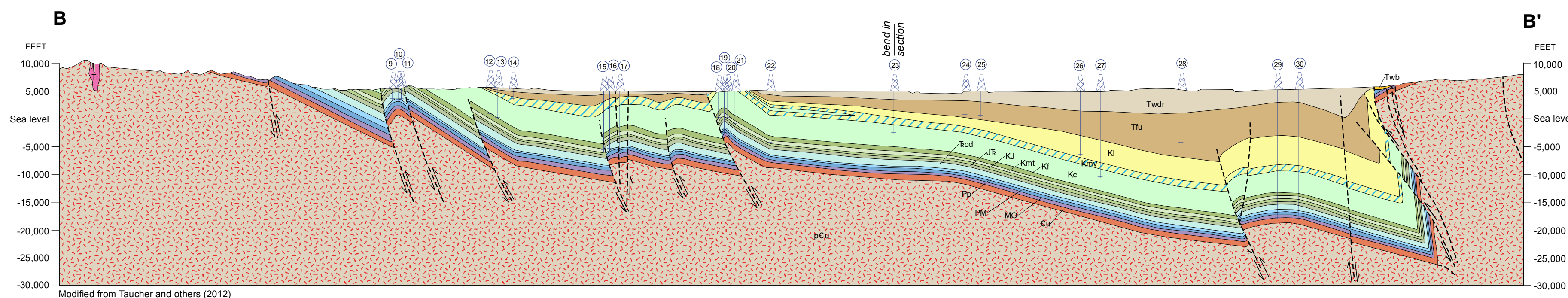
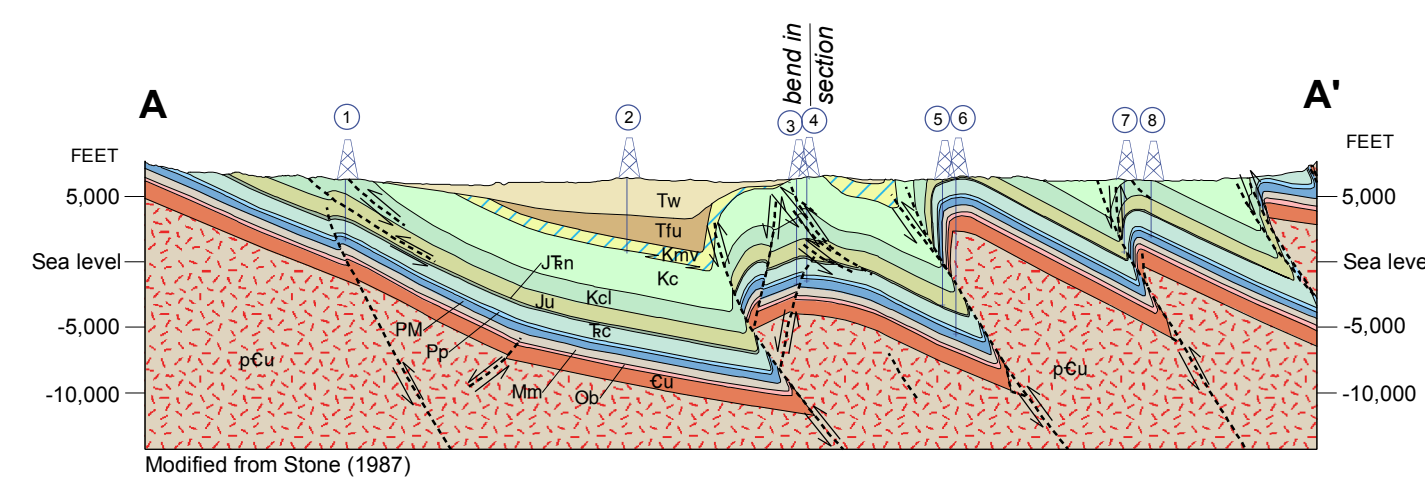


Geology - Interpreting the past - providing for the future

GEOLOGIC CROSS SECTIONS, WIND RIVER BASIN, WYOMING



Vertical exaggeration ~ 2x



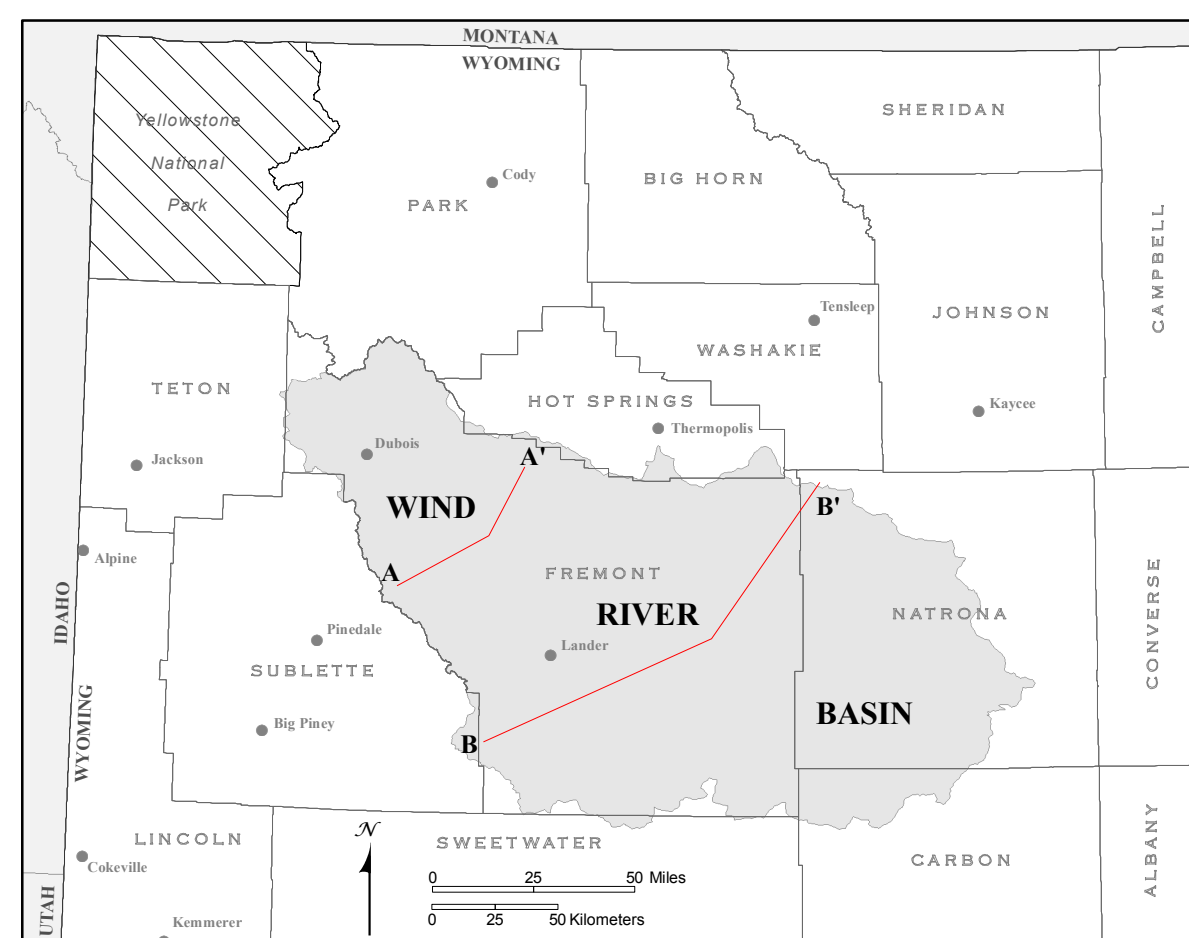
EXPLANATION

CROSS SECTION SYMBOLS

- Formation contact - Dashed where inferred
- Fault - Dashed where inferred; arrows indicate relative movement
- Drill hole - Well logs used to construct cross sections

GEOLOGIC UNITS

- CENOZOIC**
 - Tertiary**
 - Ti Intrusive igneous rocks
 - Twb Wagon Bed Formation
 - Twdr Wind River Formation
 - Tw Wasatch Formation
 - Ttu Fort Union Formation
 - MESOZOIC**
 - Cretaceous**
 - Kl Lance Formation
 - Kmv Mesaverde Formation
 - Kc Cody Shale
 - Kf Frontier Formation
 - Kmt Mowry Shale, Muddy Sandstone, and Thermopolis Shale
 - Kcl Coverly Formation
 - Jurassic**
 - Ju Jurassic rocks, undifferentiated
 - Jurassic and Triassic**
 - Jf Sundance and Gypsum Spring Formations, and Nugget Sandstone
 - Jfn Nugget Sandstone
 - Triassic**
 - Tc Chugwater Formation
 - Tcd Chugwater and Dinwoody Formations
 - PALEOZOIC**
 - Permian**
 - Pp Phosphoria Formation
 - Permian, Pennsylvanian, and Mississippian**
 - PM Tensleep Sandstone and Amsden Formation
 - Mississippian**
 - Mm Madison Limestone
 - Mississippian, Devonian, and Ordovician**
 - MO Mississippi, Devonian, and Ordovician rocks, undifferentiated
 - Ordovician**
 - Ob Bighorn Dolomite
 - Cambrian**
 - Cu Cambrian rocks, undifferentiated
 - PRECAMBRIAN**
 - pCu Precambrian rocks, undifferentiated



CROSS SECTION LOCATION MAP

WELL CONTROL ALONG CROSS SECTIONS

Well no.	API no.	Operator	Well name	Bottom formation	Surface location			County	Spud year
					sec.	T.	R.		
1	49-013-20303	Stoltz & Co.	Tribal 1-35	Tensleep	35	4N	4W	Fremont	1970
2	49-013-21236	Gulf Energy Corporation	Crowheart Butte 1 1-35-1	Cody	35	5N	3W	Fremont	1982
3	49-013-20090	Clinton Oil Company	Tribal Q 1	Madison	8	5N	2W	Fremont	1967
4	49-031-20054	Turner Smith & Associates	Tribal R 8-1	Madison	8	5N	2W	Fremont	1968
5	49-013-21422	American Beryllium Oil Corp.	AQP Tribal 36-33	Chugwater	36	6N	2W	Fremont	1984
6	49-013-21318	American Beryllium Oil Corp.	Tribal 9-24	Tensleep	9	6N	2W	Fremont	1981
7	49-013-06740	British American Oil	Tribal 1	Chugwater	4	6N	2W	Fremont	1954
8	49-013-06751	British American Oil	Arapahoe 2	Tensleep	3	6N	1W	Fremont	1956
9	49-013-21383	Hrubetz Oil Company	Dallas-Federal 1-19	Tensleep	19	32N	98W	Fremont	1983
10	49-013-06936	Sunset International	Govt 29-4B	Tensleep	29	32N	98W	Fremont	1966
11	49-013-05367	Cabeen Exploration	Govt 1	Tensleep	19	32N	98W	Fremont	1957
12	49-013-21915	Sauer Bill Oil & Gas Company LLC	Sauer Ogle 1	Frontier	7	32N	97W	Fremont	1999
13	49-013-05490	Conoco Inc.	Govt 29-4B	Morrison	8	32N	97W	Fremont	1956
14	49-013-22204	Phillips Petroleum Company	Corehole 2	Mesaverde	28	33N	97W	Fremont	2001
15	49-013-05623	Devon Energy Production Company LP	Beaver Creek Unit 10	Phosphoria	16	33N	96W	Fremont	1948
16	49-013-05639	Devon Energy Production Company LP	Beaver Creek Unit 55	Tensleep	16	33N	96W	Fremont	1958
17	49-013-05649	Devon Energy Production Company LP	Beaver Creek Unit 40	Cambrian	10	33N	96W	Fremont	1955
18	49-013-20381	Texaco Exploration & Prod.	Govt-P L Ackerman 1	Skull Creek	27	34N	95W	Fremont	1972
19	49-013-20334	Legacy Reserves Operation LP	Alkali Butte Unit 8	Madison	26	34N	95W	Fremont	1971
20	49-013-20547	Legacy Reserves Operation LP	Federal 1	Thermopolis	23	34N	95W	Fremont	1975
21	49-013-05903	M K M Oil Company	Hagood 1	Thermopolis	23	34N	95W	Fremont	1959
22	49-013-20184	Occidental	Govt-Campbell Ridge 1	Morrison	7	34N	94W	Fremont	1969
23	49-013-05997	SWEPI LP	Conant Creek Unit 22-27	Cody	27	35N	93W	Fremont	1962
24	49-013-21347	ANR Production Company	Conant Creek Unit 1-6	Fort Union	6	35N	92W	Fremont	1982
25	49-013-21454	Amerada Hess Corporation	Federal 30-23	Fort Union	30	36N	92W	Fremont	1984
26	49-013-22427	Encana Oil and Gas USA Inc.	Riverbank Unit 1	Meeteetse	31	37N	91W	Fremont	2004
27	49-013-20845	Dome Petroleum Corporation	Moneta Unit 1-29	Cody	29	37N	91W	Fremont	1978
28	49-013-21820	Noble Energy Inc.	State 44-36	Fort Union	36	38N	91W	Fremont	1997
29	49-013-21510	Burlington Resources Oil & Gas Company L	Bighorn 2-3	Gallatin	3	38N	90W	Fremont	1991
30	49-013-22127	Burlington Resources Oil & Gas Company L	Bighorn 8-35	Madison	35	39N	90W	Fremont	2001

NOTICE TO USERS OF INFORMATION FROM THE WYOMING STATE GEOLOGICAL SURVEY

The WSGS encourages the fair use of its material. We request that credit be expressly given to the "Wyoming State Geological Survey" when citing information from this publication. Please contact the WSGS at 307-766-2286, ext. 224, or by e-mail at wsgs.sales@wyo.gov if you have questions about citing materials, preparing acknowledgments, or extensive use of this material. We appreciate your cooperation.

Individuals with disabilities who require an alternative form of this publication should contact the WSGS. For the TTY relay operator call 1-800-877-9975.

For more information about the WSGS or to order publications and maps, go to www.wsgs.uwyo.edu, call 307-766-2286, ext. 224, or email wsgs.sales@wyo.gov.

DISCLAIMERS

The Wyoming State Geological Survey (WSGS) and the State of Wyoming make no representation or warranty, expressed or implied, regarding the use, accuracy, or completeness of the data presented herein, or of a map printed from these data. The act of distribution shall not constitute such a warranty. The WSGS does not guarantee the digital data or any map printed from the data to be free of errors or inaccuracies.

The WSGS and the State of Wyoming disclaim any responsibility or liability for interpretations made from these digital data or from any map printed from these digital data, and for any decisions based on the digital data or printed maps. The WSGS and the State of Wyoming retain and do not waive sovereign immunity.

The use of or reference to trademarks, trade names, or other product or company names in this publication is for descriptive or informational purposes only, or is pursuant to licensing agreements between the WSGS or State of Wyoming and software or hardware developers/vendors, and does not imply endorsement of those products by the WSGS or the State of Wyoming.

REFERENCES

Stone, D.S., 1987, Rocky Mountain Transect—Wyoming, transect segments SW 3 and SW 2: Littleton, Co., DVD, version 2.0.

Taucher, P., Bartons, T.T., Clarey, K.E., Quillinan, S.A., Hallberg, L.L., Clark, M.L., Thompson, M., Gribb, N., Worman, B., and Gracias, T., 2012, in Copeland, D. ed., Available groundwater determination, Technical Memorandum, Wind/Bighorn River Basin water plan update, groundwater study, Level 1 (2008–2011): Prepared for the Wyoming Water Development Commission, by the Wyoming State Geological Survey, Laramie, Wyo., [variously paged].

ACKNOWLEDGMENT

The Wyoming State Geological Survey thanks D.S. Stone for his permission to modify portions of the Rocky Mountain Transect, as shown in cross section A - A'.

Layout and design by Phyllis A. Ranz and Robert Kirkwood
 Edited by Suzanne C. Lühr